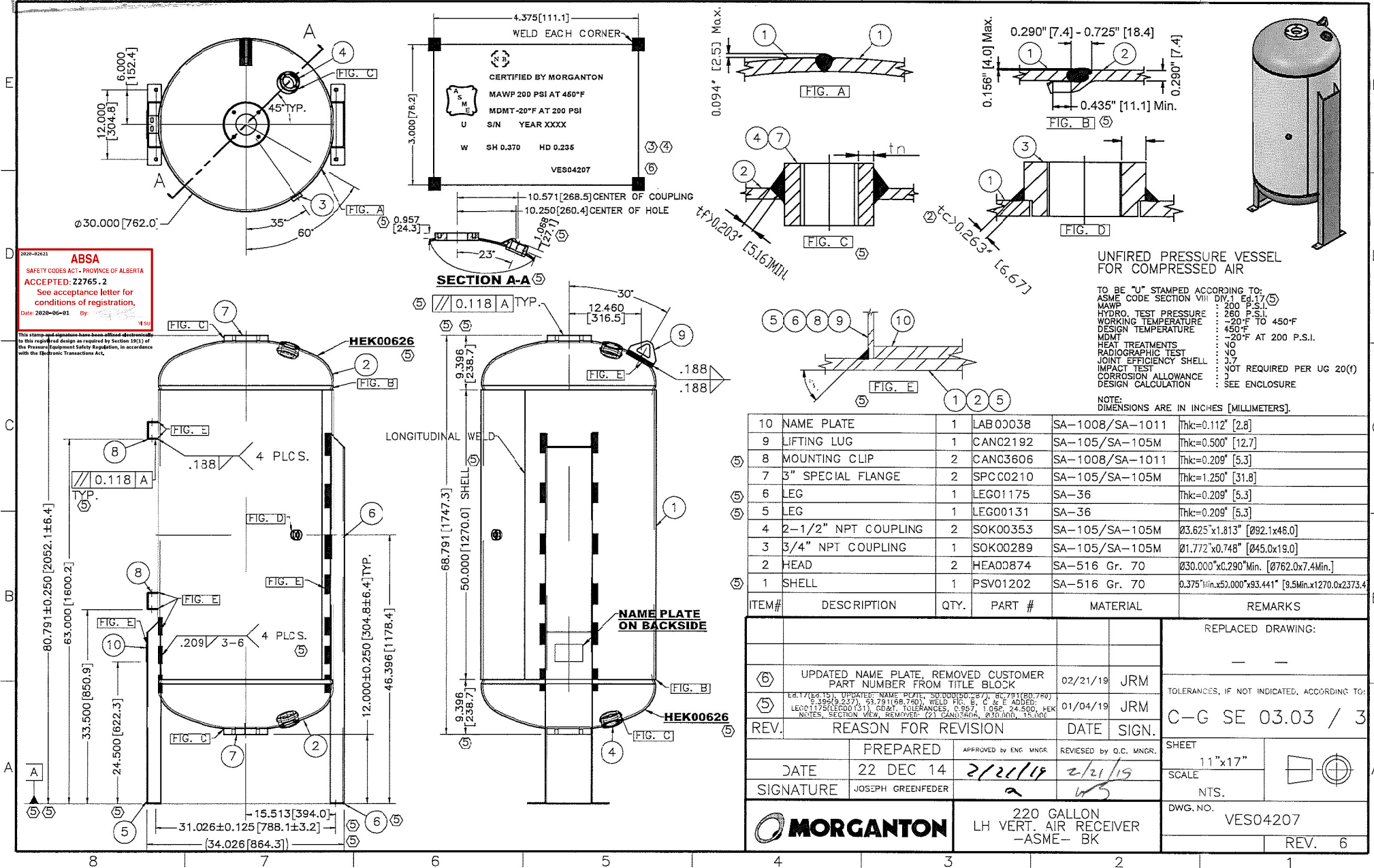


APPROVED
FOR CONSTRUCTION
MORGANTON

ASME
CONSTRUCTION
MORGANTON



2020-02622
ABSA
SAFETY CODES ACT - PROVINCE OF ALBERTA
ACCEPTED: 22765.2
See acceptance letter for conditions of registration.
Date: 2028-06-01 By: [Signature]

This stamp and signature have been affixed electronically to this original design as required by Section 50(1) of the Pressure Equipment Safety Regulation, in accordance with the Electronic Transactions Act.

UNFIRED PRESSURE VESSEL FOR COMPRESSED AIR

TO BE "U" STAMPED ACCORDING TO:
ASME CODE SECTION VIII DIV.1 Ed.17 (5)
MAWP: 200 P.S.I.
HYDRO. TEST PRESSURE: 260 P.S.I.
WORKING TEMPERATURE: -20°F TO 450°F
DESIGN TEMPERATURE: 450°F
MDMT: -20°F AT 200 P.S.I.
HEAT TREATMENTS: NO
RADIOGRAPHIC TEST: NO
JOINT EFFICIENCY SHELL: 0.7
IMPACT TEST: NOT REQUIRED PER UG 20(f)
CORROSION ALLOWANCE: 0
DESIGN CALCULATION: SEE ENCLOSURE

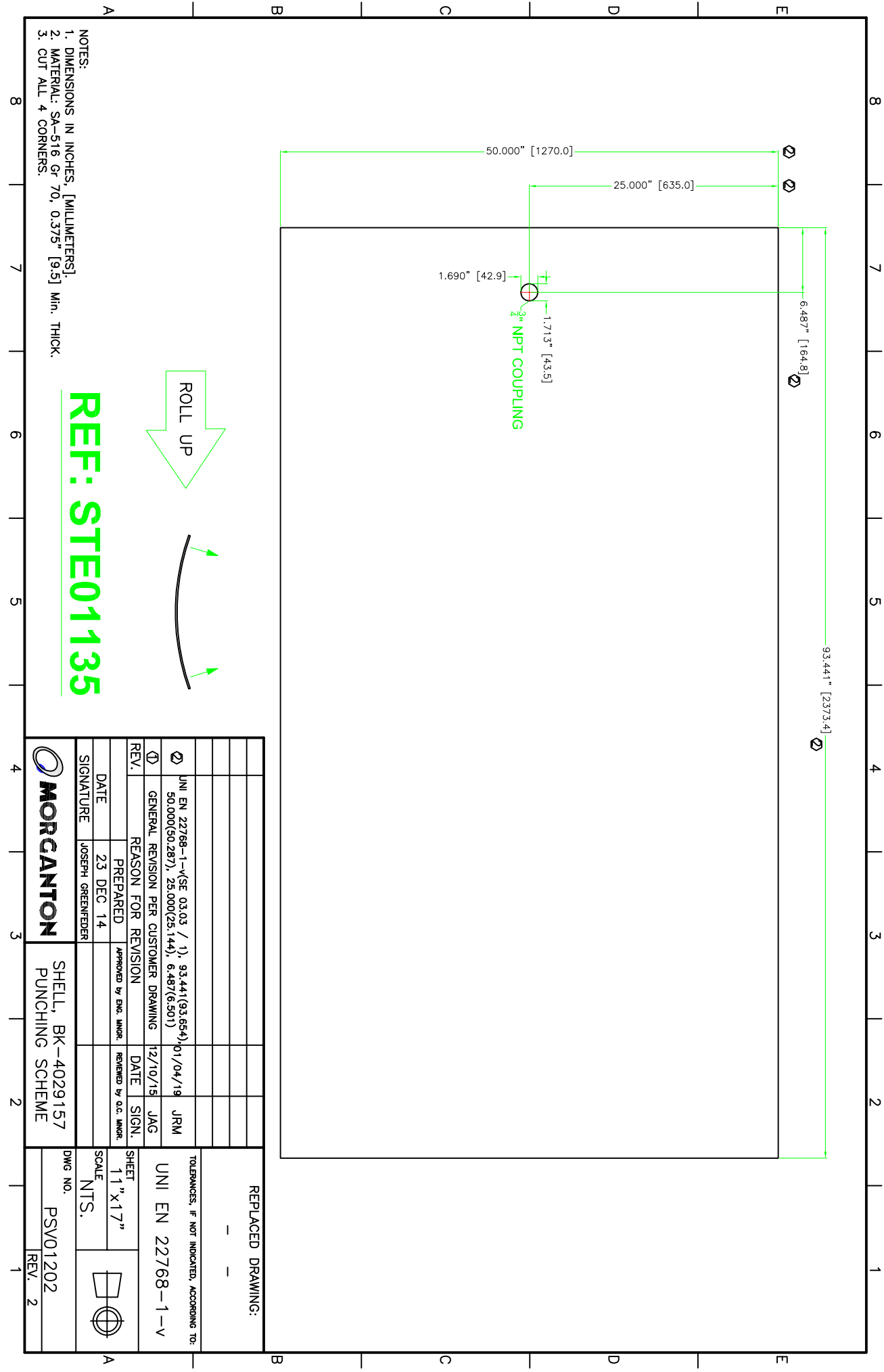
NOTE: DIMENSIONS ARE IN INCHES [MILLIMETERS].

ITEM#	DESCRIPTION	QTY.	PART #	MATERIAL	REMARKS
10	NAME PLATE	1	LAB 00038	SA-1008/SA-1011	Thk=0.112" [2.8]
9	LIFTING LUG	1	CANC2192	SA-105/SA-105M	Thk=0.500" [12.7]
8	MOUNTING CLIP	2	CANC3606	SA-1008/SA-1011	Thk=0.209" [5.3]
7	3" SPECIAL FLANGE	2	SPCC0210	SA-105/SA-105M	Thk=1.250" [31.8]
6	LEG	1	LEG01175	SA-36	Thk=0.209" [5.3]
5	LEG	1	LEG00131	SA-36	Thk=0.209" [5.3]
4	2-1/2" NPT COUPLING	2	SOK00353	SA-105/SA-105M	Ø3.625"x1.813" [Ø92.1x46.0]
3	3/4" NPT COUPLING	1	SOK00289	SA-105/SA-105M	Ø1.772"x0.748" [Ø45.0x19.0]
2	HEAD	2	HEAD0874	SA-516 Gr. 70	Ø30.000"x0.290" Min. [Ø762.0x7.4 Min.]
1	SHELL	1	PSV01202	SA-516 Gr. 70	0.375" Min. x 50.000" x 83.441" [9.5 Min. x 1270.0 x 2137.4]

REV.	REASON FOR REVISION	DATE	SIGN.	SHEET
				11"x17"
				SCALE
				NTS.
				DWG. NO.
				REV.

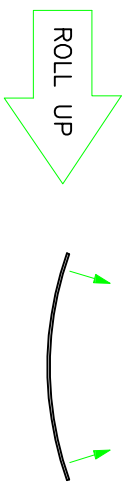
MORGANTON
LH VERT. AIR RECEIVER
-ASME- BK

D.H.
2/25/19



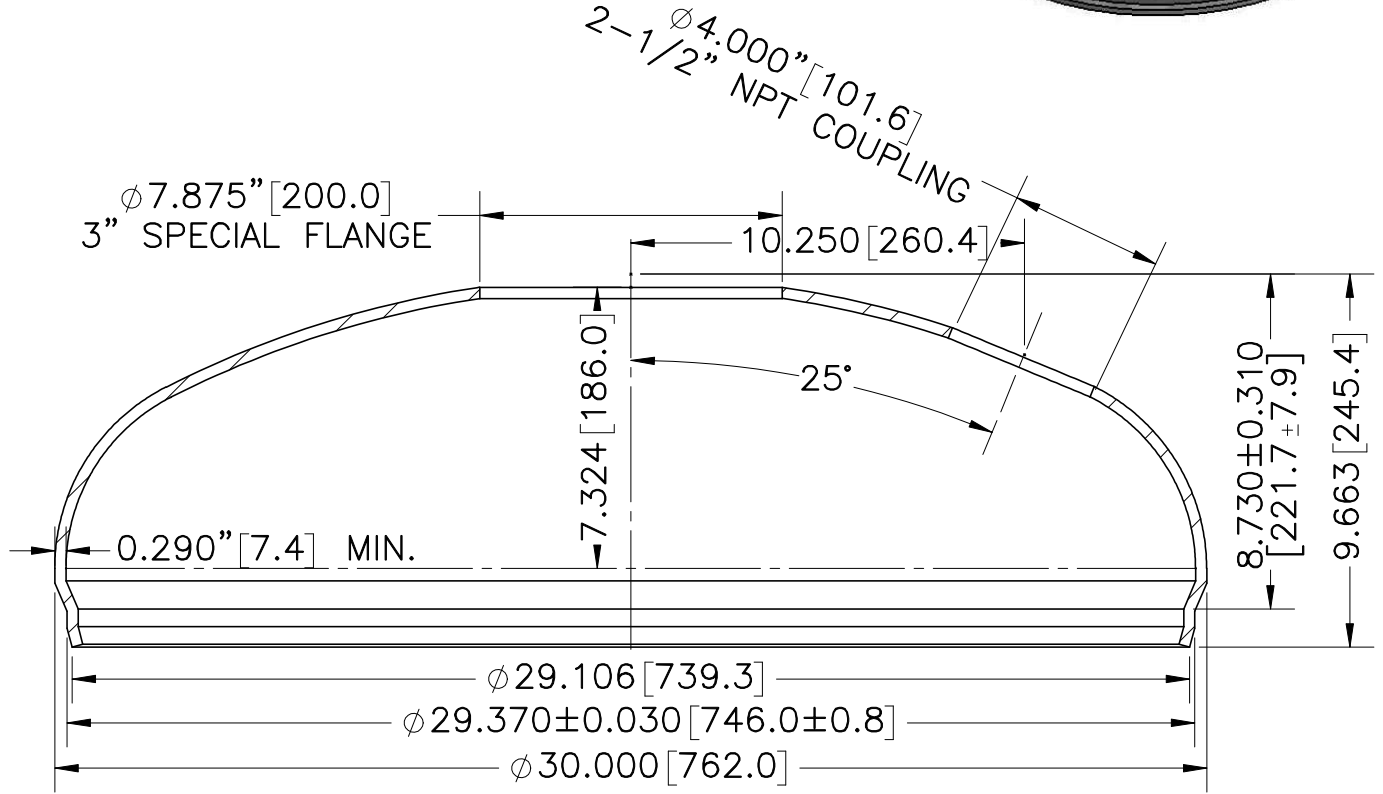
- NOTES:
1. DIMENSIONS IN INCHES. [MILLIMETERS].
 2. MATERIAL: SA-516 Gr 70, 0.375" [9.5] Min. THICK.
 3. CUT ALL 4 CORNERS.

REF: STE01135



REPLACED DRAWING:		TOLERANCES, IF NOT INDICATED, ACCORDING TO:	
-		-	
UNI EN 22768-1-V		SHEET	
SCALE		1 1" x 1 7"	
NTS.		DWG NO.	
PSV01202		REV. 2	
MORCANTON		SHELL, BK-4029157	
PUNCHING SCHEME		DATE	
DATE		23 DEC 14	
SIGNATURE		JOSEPH GREENFEDER	
REV.		REASON FOR REVISION	
①		GENERAL REVISION PER CUSTOMER DRAWING	
②		UNI EN 22768-1-(SE 03.03 / 1), 93.441(93.654), 30.000(30.287), 23.000(23.144), 6.487(6.301)	
DATE		12/10/15	
APPROVED BY ENGR. INGR.		REVIEWED BY O.C. INGR.	
JRM		JAG	

FROM SOLID HEAD: HEA00574



- NOTES:
 1. MATERIAL: SA-516 Gr. 70.
 2. DIMENSIONS ARE INCHES, [MILLIMETERS].

REPLACED DRAWING

= =

TOLERANCES, IF NOT INDICATED, ACCORDING TO:

SE 03.03 / 1

<1>

UPDATED HEAD PROFILE

08/01/17

JRM

REASON FOR REVISION-IS (WAS)

DATE

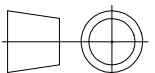
SIGN

SHEET

8.5"x11"

SCALE

1:5



DATE

12 DEC 14

APPROVED by ENG. MNGR.

REVIEWED by Q.C. MNGR.

SIGNATURE

JOSEPH GREENFEDER



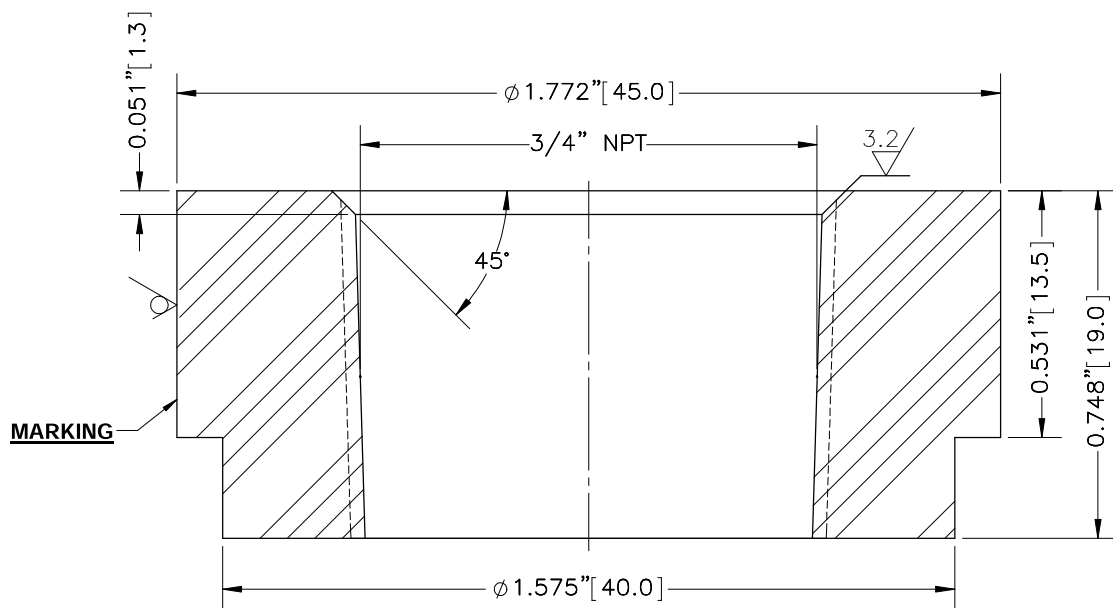
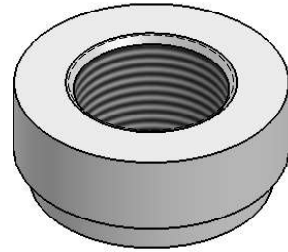
30" HEAD

DRAWING No.:

HEA00874

REV. 1

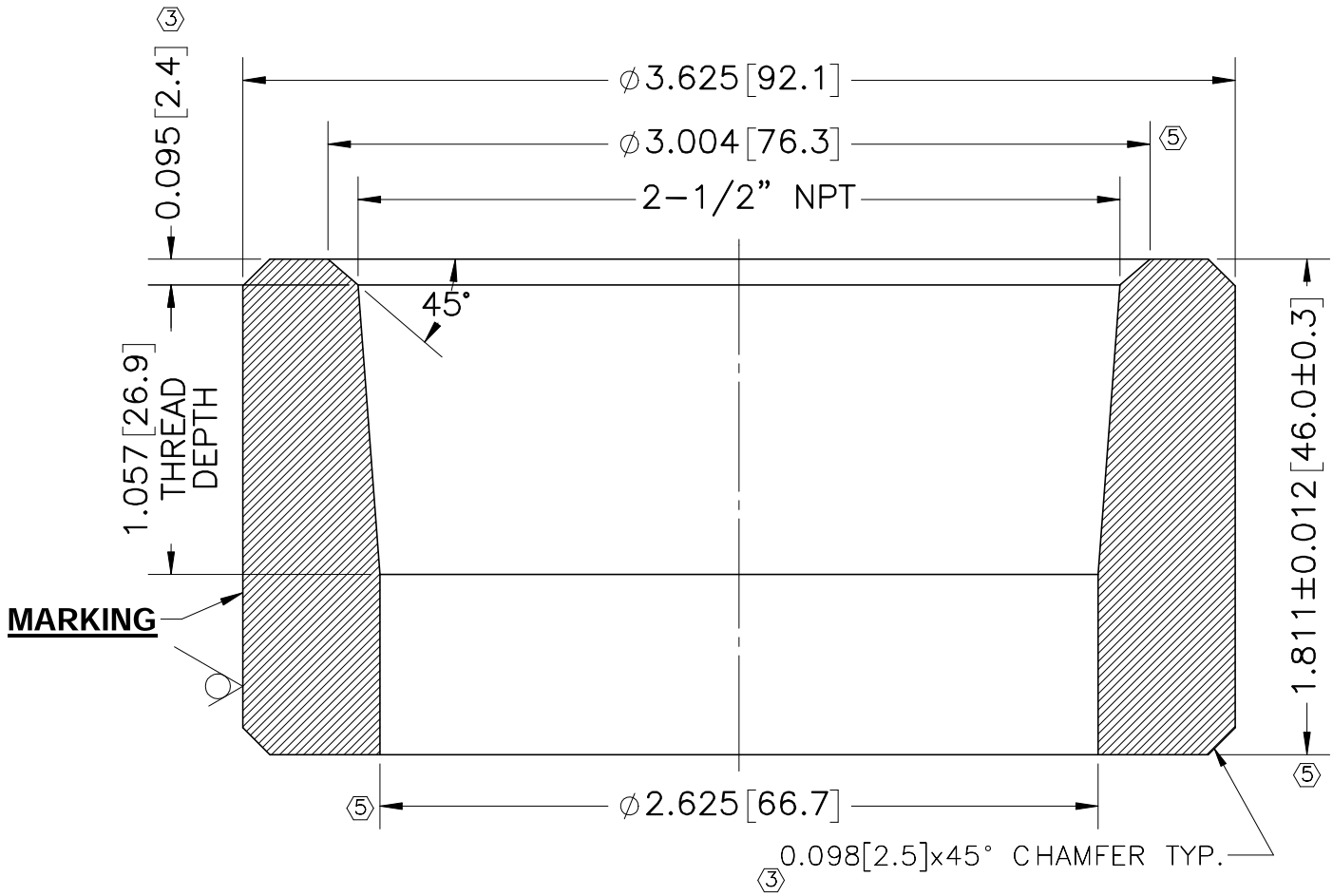
ELSE $\nabla 25$



NOTES:

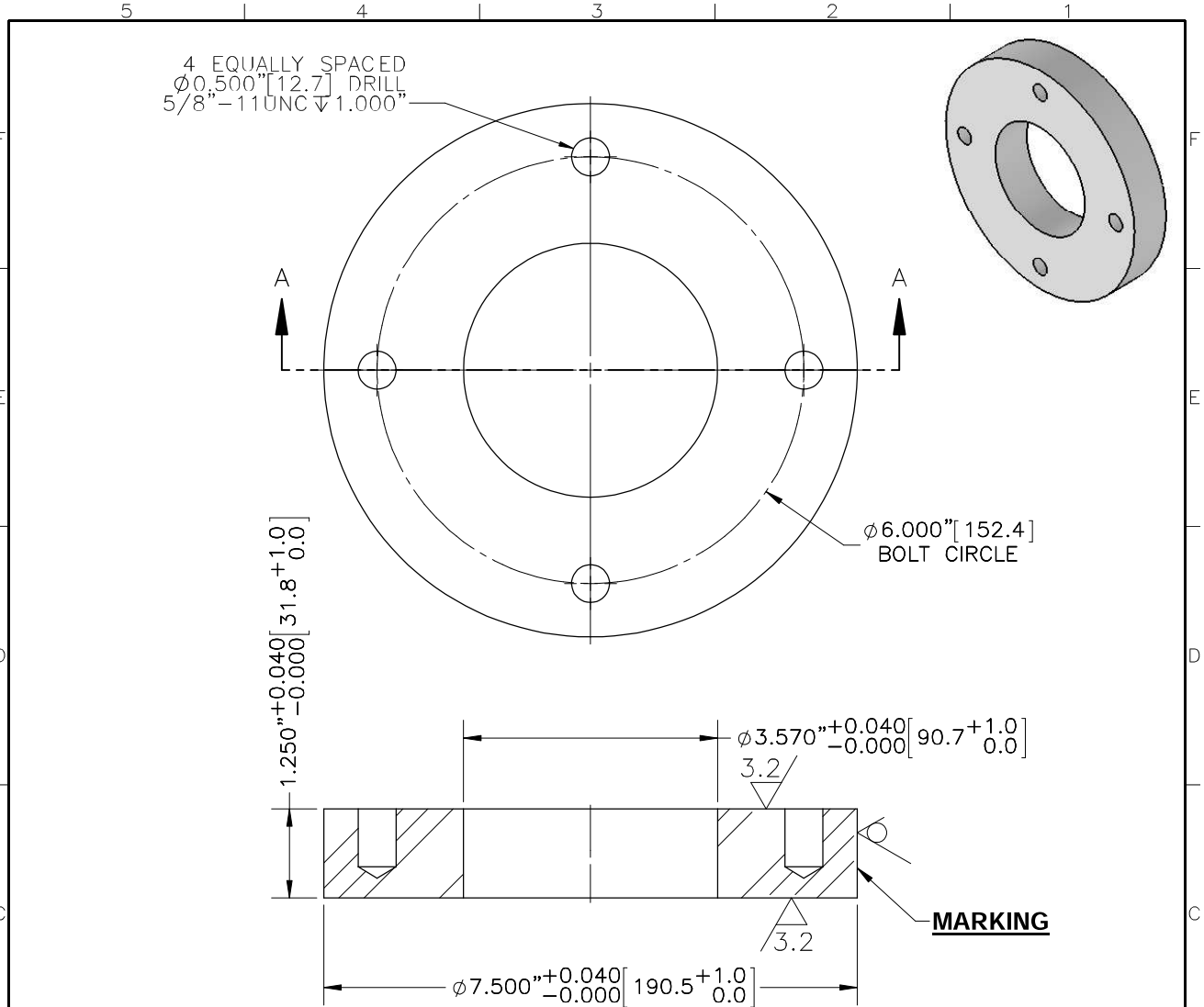
1. MATERIAL: SA-105/SA-105M.
2. DIMENSIONS ARE INCHES, [MILLIMETERS].
3. MARKINGS: MATERIAL SPECIFICATION, MANUFACTURER TRADEMARK, HEAT NUMBER STAMPED ON PART.

				REPLACED DRAWING	
				FC000304019N00	
				TOLERANCES, IF NOT INDICATED, ACCORDING TO:	
				SE 03.03 / 1	
②	UPDATED TO 3D SOLID MODEL		6/25/15	JAG	SHEET 8.5"x11"
①	MODIFIED BOTTOM "SHOULDER" DIAMETER		6/02/09		
REV.	REASON FOR REVISION-IS (WAS)		DATE	SIGN	SCALE 3:1
	PREPARED	APPROVED by ENG. MNGR.	REVIEWED by Q.C. MNGR.		
	DATE	23 JAN 12			DRAWING No.: SOK00289
	SIGNATURE	CM			
			3/4" NPT COUPLING		
				REV. 2	



- NOTES:
1. MATERIAL: SA-105/SA-105M.
 2. DIMENSIONS ARE INCHES, [MILLIMETERS].
 3. MARKINGS: MATERIAL SPECIFICATION, MANUFACTURER TRADEMARK, HEAT NUMBER STAMPED ON PART.

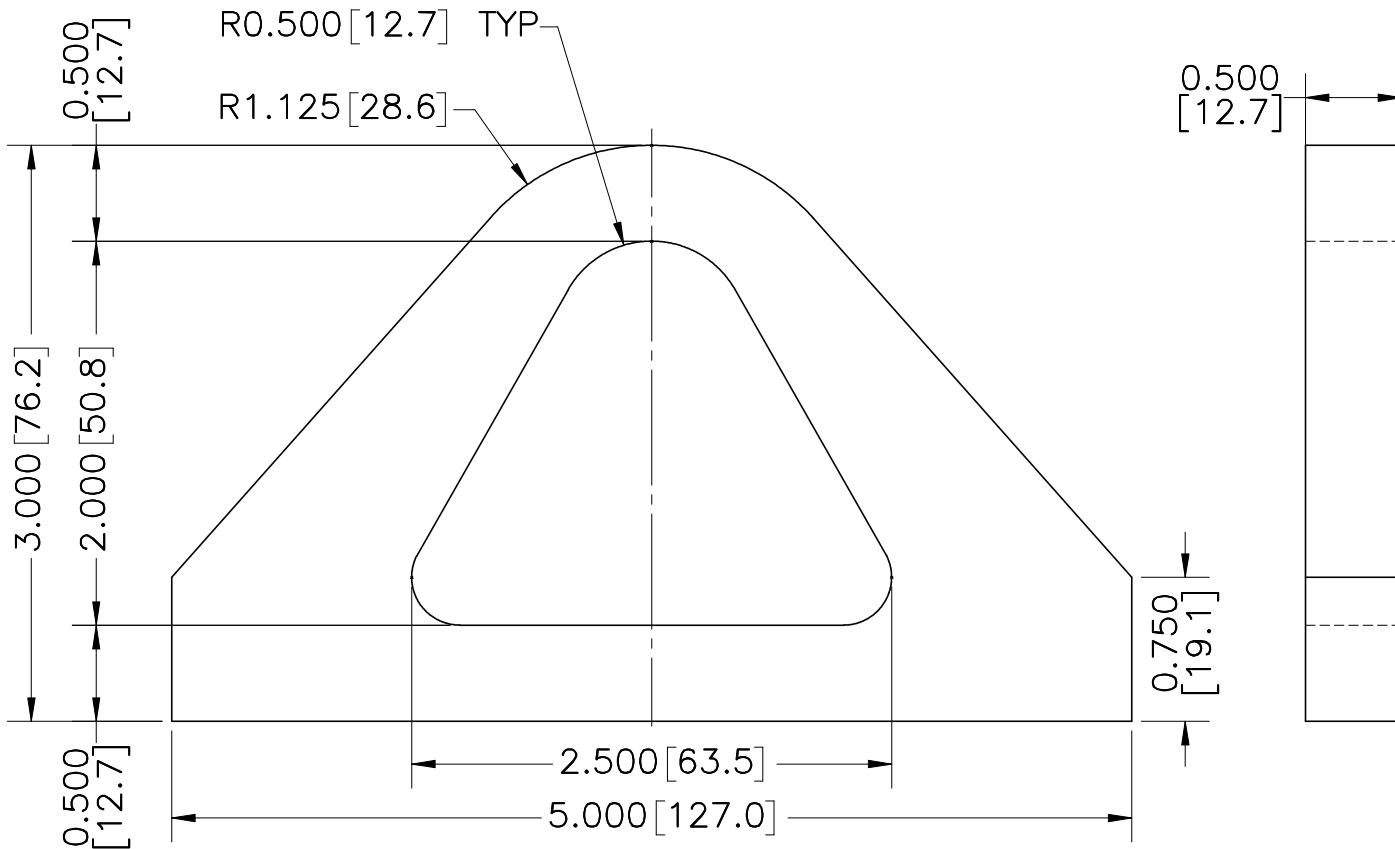
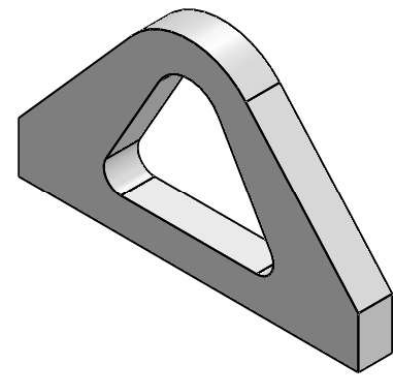
				REPLACED DRAWING	
				= =	
⑤	ADDED: 3.004, 2.6.25, TOLERANCES	01/14/20	JRM	TOLERANCES, IF NOT INDICATED, ACCORDING TO: UNI EN 22768-1-m	
④	UNI EN 22768-1-m(SE 03.03 / 1)	08/22/17	JAG		
③	CHANGED CHAMFER TO 2.5(1.0)	04/10/15	JAG		
②	UPDATED TO 3D SOLID MODEL	12/15/14	JAG		
①	ADDED CHAMFER INFORMATION	04/09/12	GD		
REV.	REASON FOR REVISION-IS (WAS)	DATE	SIGN	SHEET	
	PREPARED	APPROVED by ENG. MNGR.	REVIEWED by Q.C. MNGR.	8.5"x11"	
	DATE	23 JAN 12		SCALE	
	SIGNATURE	CM		3:2	
		2-1/2" NPT COUPLING		DRAWING No.: SOK00353	
				REV. 5	



SECTION A-A

- NOTES:
 1. MATERIAL: SA-105/SA-105M.
 2. DIMENSIONS ARE INCHES, [MILLIMETERS].
 3. MARKINGS: MATERIAL SPECIFICATION, MANUFACTURER TRADEMARK, HEAT NUMBER STAMPED ON PART.

				REPLACED DRAWING	
				= =	
				TOLERANCES, IF NOT INDICATED, ACCORDING TO:	
				SE 03.03 / 1	
REV.	REASON FOR REVISION-IS (WAS)		DATE	SIGN	
	PREPARED	APPROVED by ENG. MNGR.		SHEET 8.5"x11"	
DATE	16 DEC 14			SCALE	
SIGNATURE	JOSEPH GREENFEDER			1:2	
				DRAWING No.:	
				SPC00210	
<p style="text-align: center;">3" SPECIAL FLANGE</p>				REV. 0	



- NOTES:
 1. MATERIAL: SA-105/SA-105M.
 2. DIMENSIONS ARE INCHES, [MILLIMETERS].

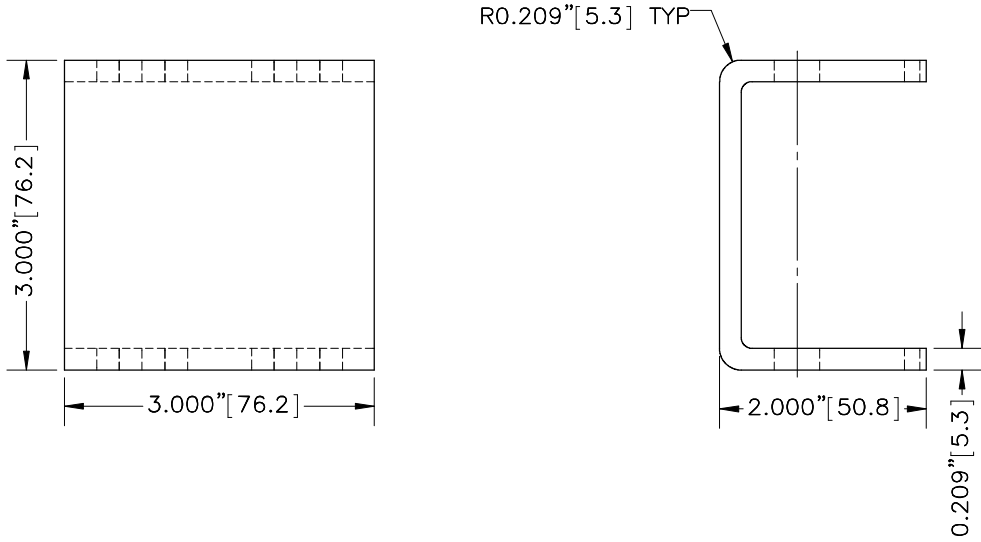
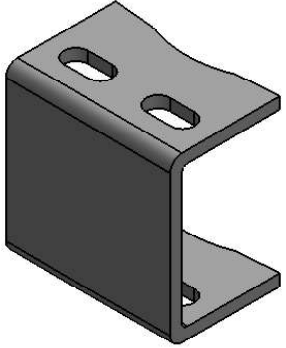
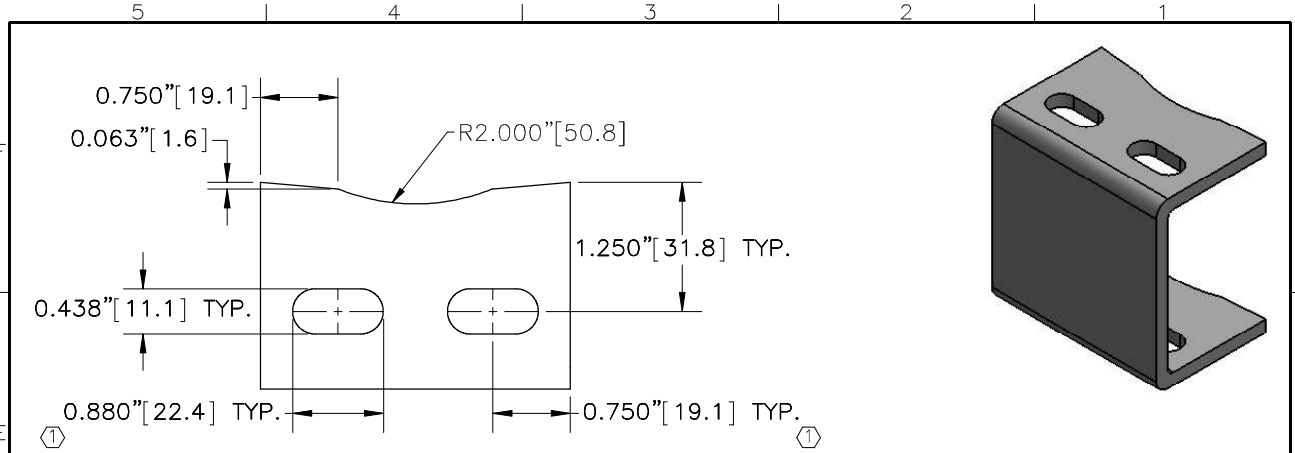
③	UNI EN 22768-1-m(SE 03.03 / 1)	05/15/18	JAG
②	UPDATED TO 3D SOLID MODEL	12/22/14	JAG
①	UPDATED MATERIAL INFORMATION	02/13/12	CM
REV.	REASON FOR REVISION-IS (WAS)	DATE	SIGN
	PREPARED	APPROVED by ENG. MNGR.	
DATE	13 FEB 12	REVIEWED by Q.C. MNGR.	
SIGNATURE	CM		

REPLACED DRAWING = =	
TOLERANCES, IF NOT INDICATED, ACCORDING TO: UNI EN 22768-1-m	
SHEET 8.5"x11"	
SCALE 1:1	
DRAWING No.: CAN02192	



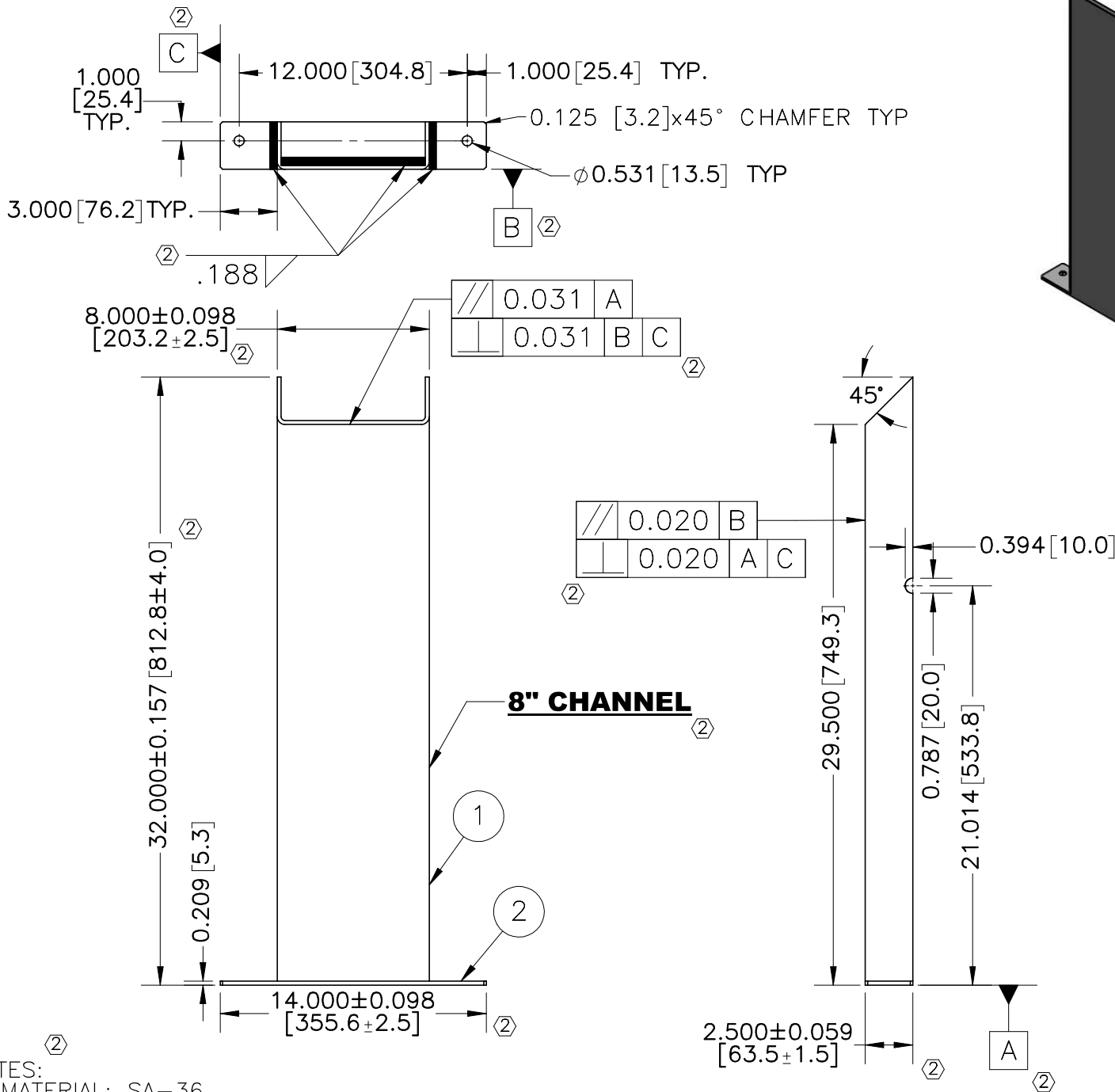
LIFTING LUG

REV. 3



NOTES:
 1. MATERIAL: SA-1008/SA-1011.
 2. DIMENSIONS ARE INCHES, [MILLIMETERS].

				REPLACED DRAWING	
				= =	
				TOLERANCES, IF NOT INDICATED, ACCORDING TO:	
				SE 03.03 / 1	
①	INCREASED SLOT LENGTH TO 0.880"(0.625") & SLOT CENTER TO 0.750"(0.625")		07/22/15	JAG	
REV.	REASON FOR REVISION-IS (WAS)		DATE	SIGN	SHEET
	PREPARED	APPROVED by ENG. MNGR.	REVIEWED by Q.C. MNGR.		8.5"x11"
	DATE	10 DEC 14			SCALE
	SIGNATURE	JOSEPH GREENFEDER			2:3
			MOUNTING CLIP		
				DRAWING No.:	
				CAN03606	
				REV. 1	



NOTES:
 1. MATERIAL: SA-36
 2. DIMENSIONS ARE INCHES, [MILLIMETERS].

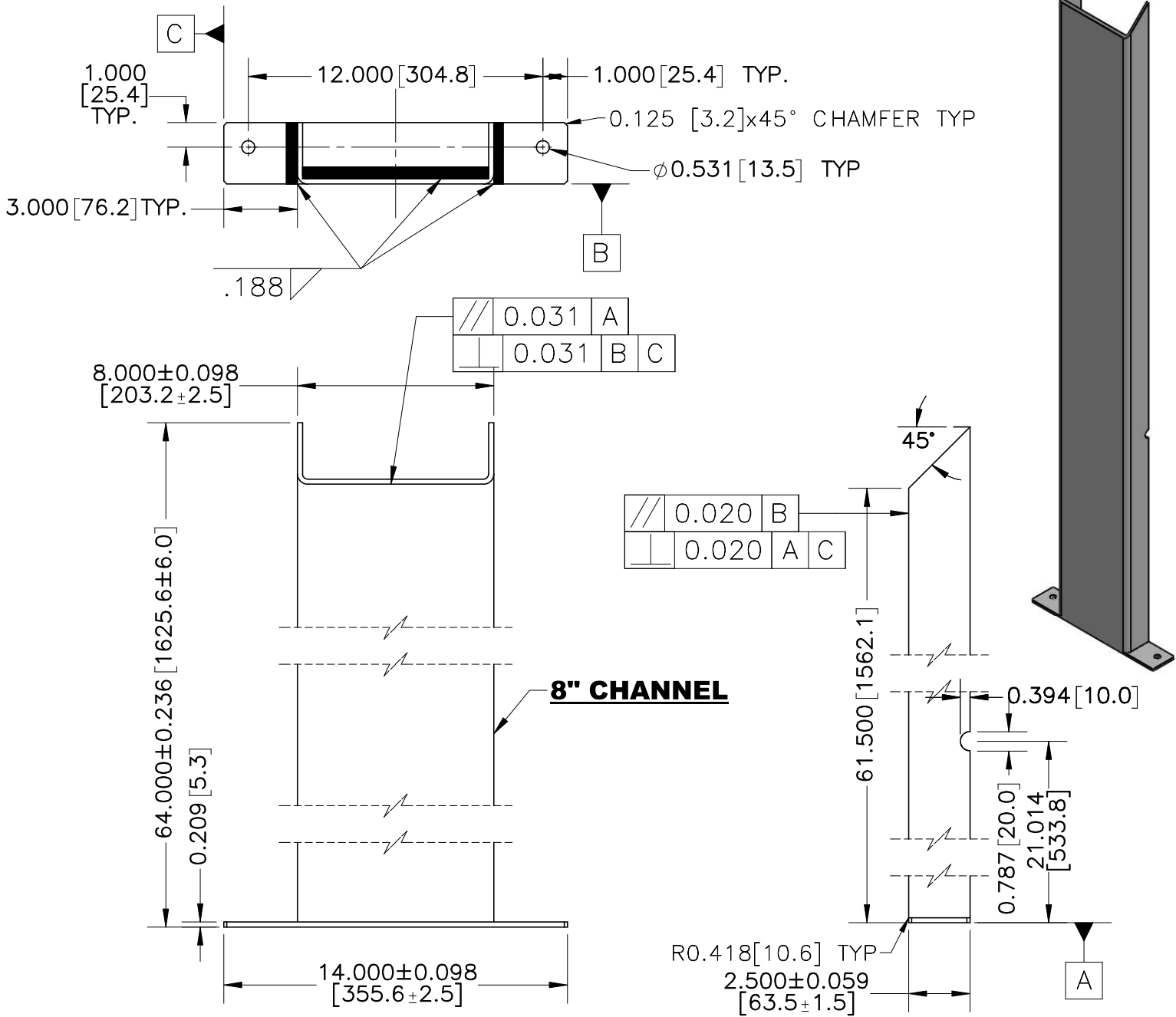
②	UNI EN 22768-1-v(SE 03.03 / 1), UPDATED: MATERIAL, NOTES, ADDED: TOLERANCES, GD&T	01/03/19	JRM
①	ADDED WELD SYMBOL	04/30/15	JAG
REV.	REASON FOR REVISION-IS (WAS)	DATE	SIGN
	PREPARED	APPROVED by ENG. MNGR.	
	DATE	REVIEWED by Q.C. MNGR.	
	SIGNATURE		
	12 DEC 14		
	JOSEPH GREENFEDER		

REPLACED DRAWING	
= =	
TOLERANCES, IF NOT INDICATED, ACCORDING TO:	
UNI EN 22768-1-v	
UNI EN 22768-1-k	
SHEET	8.5"x11"
SCALE	
1:8	
DRAWING No.:	



LEG

LEG00131
 REV. 2



NOTES:
 1. MATERIAL: SA-36.
 2. DIMENSIONS ARE INCHES, [MILLIMETERS].

REV.	REASON FOR REVISION-IS (WAS)	DATE	SIGN
	PREPARED	APPROVED by ENG. MNGR.	REVIEWED by Q.C. MNGR.
	DATE	03 JAN 19	
	SIGNATURE	JESSE MCLEAN	

REPLACED DRAWING = =
TOLERANCES, IF NOT INDICATED, ACCORDING TO: UNI EN 22768-1-v UNI EN 22768-1-k
SHEET 8.5"x11"
SCALE 1:6
DRAWING No.:



LEG

LEG01175
REV. 0

5 | 4 | 3 | 2 | 1

F

E

D

C

B

A

F

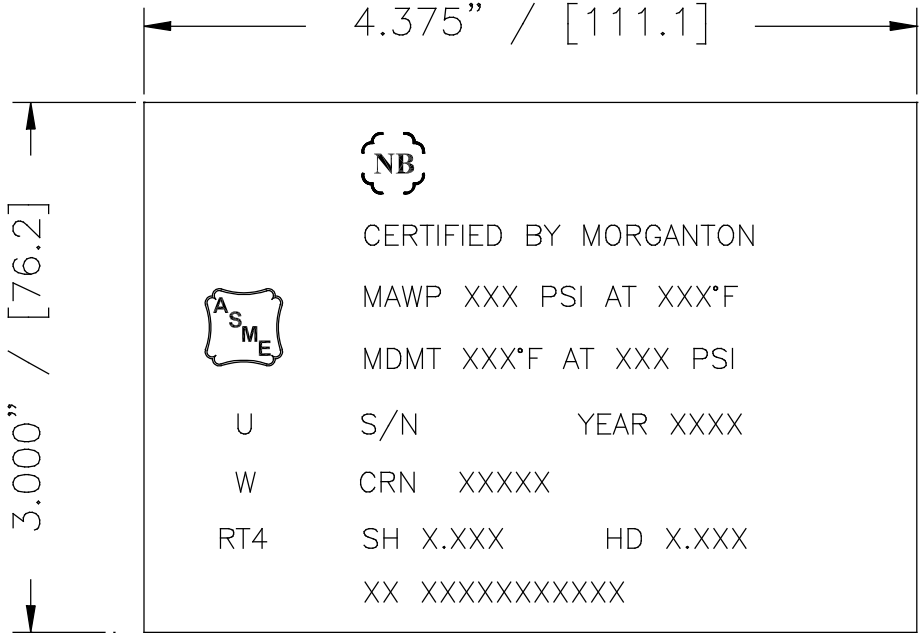
E

D

C


B

A



NOTES:

1. MATERIAL: SA-1008/SA-1011.
2. DIMENSIONS ARE INCHES, [MILLIMETERS].
3. TO BE IMPLEMENT FOR NEW PROJECTS AND REVISIONS.

					REPLACED DRAWING = =
					TOLERANCES, IF NOT INDICATED, ACCORDING TO: SE 03.03 / 1
REV.	REASON FOR REVISION—IS (WAS)	DATE	SIGN	SHEET 8.5"x11"	
	PREPARED	APPROVED by ENG. MNGR.	REVIEWED by Q.C. MNGR.	SCALE 1:1	
DATE	18 JAN 13			DRAWING No: LAB00038	
SIGNATURE	ADAM MCLANE			REV. 0	
			NAME PLATE		

5 | 4 | 3 | 2 | 1